



# 2024 ANNUAL REPORT



## ŌTEPOTI & WAIHŌPAI YOUTH TRANSITION HOUSES

### Te Tuarāwharau Youth Transition Services

Our Youth Transition Houses (YTH) in Ōtepoti, which opened in 2018, and Waihōpai, which opened in 2020, have been successfully supporting over 130 young Rakatahi /young people aged 16-19 who would otherwise be homeless.

These houses offer a safe and supportive environment where each Rakatahi receives tailored support and housing plans to address their specific needs and help them transition into sustainable community accommodation.

We work closely with our referrers and community supports to ensure the YTH effectively meets the needs of young people, achieving stable futures by promoting personal well-being and supporting their success in education, training, and employment.

We are seeing an increasing need for support for residents due to the current challenging property market, which makes it difficult for residents to transition. This especially holds true for 16-17 year-olds who often struggle with tenancy documents and landlord acceptance.

Our dedicated staff, including our Kairuruku Whare-Kaupapa Rakatahi (YTH Coordinator) and our Taituarā a Hāpori (Community Services Specialist), help provide:



The YTH operates to empower Rakatahi by providing them with aroha (love) and manaakitanga (respect), allowing them to make their own decisions with care and guidance.

Ultimately, our aim is to empower these young people to build brighter futures. By providing the tools to engage with education, training, or employment opportunities and strengthening their ties to the community, we strive to help them overcome hurdles and unlock their full potential.

### He Kāika Whāwhātrua Young Mums Transition House

Since the establishment of our Young Mums Transition House (YMT) in Waihōpai in 2022, we have provided a safe and supportive environment for teenage mums aged 16-24 years and their pepi/babies. Our goal is to help them move towards independent living while learning valuable life skills.

To date, we have housed 10 teenage mums and their 13 pepi/babies, many of whom have had additional care needs. In our nurturing setting, these young mothers and their babies have the opportunity to thrive, supported by strong networks and the chance to develop social, educational, and employment goals. Our dedicated staff, including our Taituarā a Hāpori (Community Services Specialist), empower these young mums to become self-reliant and to raise healthy, resilient tamariki/children.

Typically, our residents stay with us for 4-8 months but can be at the house for up to 12 months depending on their individual circumstances. The young mums may face many challenges that sometimes require them to stay longer at the Transitional House.

We have developed strong networks that have enabled some of our young mums to transition from the YMT to Kāinga Ora Housing or other sustainable private rentals, providing them with stable, long-term accommodation. Stable independence is the goal of the YMT and the move into sustainable accommodation is one of the most important steps for these families in building a solid foundation for their future. The transition marks a crucial step towards long-term self-sufficiency and well-being, ensuring that these young families can continue to grow and prosper in a supportive environment. We continue to work with the mums for three months after they leave the house to ensure the transition is successful.

Our commitment to supporting young mums and their babies extends beyond their stay at the YMT. By fostering a nurturing and empowering environment, we help these families build brighter futures.



Matua te tihi  
Matua te kaha  
Matua te āio  
Matua te mana  
Whiua te hā kino  
Tōkia te hā ora  
Ki runga, ki raro, ki waho, ki roto  
Haumi e, Hui e, Tāiki e

We seek to achieve great things  
We seek strength  
We seek calmness  
We seek to enhance mana  
Cast aside anxieties  
Surround ourselves with everything good  
Above us, below us, outside of us, inside us  
To this we all agree

The Mission has seen our work, and income, increase for the 9th year in a row, with the 2023-24 accounts showing we are more than three times the size we were in 2014-15, even with the significant interruption of COVID-19 in 2020.

This has not been an easy or certain achievement and represents a decade of extremely hard work. In 2013, and at very short notice, the Mission lost our Forward Focussed Training Opportunities funding, roughly 25% of our income (as did every other FFO provider). After the financial punch of the Global Financial Crisis in 2009, it nearly finished us.

We learnt then that the older a programme is, the more likely it is to have been superseded by someone else innovating something better, faster, cheaper, more impactful.

So that while being entrepreneurial is stressful and risky, we decided it better to be an innovator than to face existentially threatening change when funders' interests inevitably change.

Over the years since we have forged relationships with researchers at the University of Otago (to ensure our efforts are contributing to genuinely effective interventions), with entrepreneurial philanthropic funders such as the Tindall Family Foundation, and with policy makers who are also interested in doing good, better.

It doesn't happen overnight. In three years, the ENGAGE programme we run under license to the University of Otago will be in half of all Early Childhood Education services (ECEs) in NZ, but the work to get to that started in 2015.

Our Youth Transition Houses are now in their 6th year of delivery, but we started developing the concept 4 years before that.

Governments change, COVID-19 came out of nowhere, demographic change seems to be taking hold at a rapid pace: in the work of social change, the unexpected is a constant companion. The Mission chose some time ago not to fight the future, but instead to be ready and willing to adapt.

The Mission is grateful to those partners who have taken risks with us, and to our staff past and present who have borne the organisational stresses this adaptability and achievement-orientation have brought.

And we are looking again to the future to find out what we might be able to do next.

Laura Black, Kaihautū, Director & Julie Pearse, Tiamana, Chairperson

## METHODIST MISSION MAJOR FUNDERS & PRIVATE DONORS

### Private Donors

Bruce Spittle  
Cliff Abraham  
Debbie Iversen & Wayne Goodall  
Father Peter Devereux  
FE Farley  
Julie Roberts  
Laura Black  
Patricia Vanderburg  
Paul Barton  
Rachael Masterton  
Rhonda McSkimming  
Richard Cannon  
Sarah Jenkin  
Steven Reeve

### Major Funders

Active Southland  
Catalytic Foundation  
Dunedin City Council  
Estate of Emma Agnes Sellars  
Helen Stewart Royle Charitable Trust  
Invercargill City Council  
Kaiapoi North School  
McRobie Photography  
Mercy Hospital  
Methodist Alliance (MCNZ)  
Ministry of Education  
Ministry of Housing & Urban Development  
Ministry of Justice  
Morningson Methodist Church

Morningson Methodist Women's Fellowship  
Otago Community Trust  
Quaker Peace & Service Aotearoa NZ  
Sports Otago and Sport New Zealand  
Te Kura Tuatahi O Kaiapoi (Kaiapoi Borough School)  
Te Rourou One Aotearoa Foundation  
Tindall Foundation  
University of Otago

## INDEPENDENT AUDITOR'S REPORT



### REPORT OF THE INDEPENDENT AUDITOR ON THE SUMMARY FINANCIAL REPORT

To the Board of Methodist Mission Southern

**Opinion**  
The summary financial report, which comprises the summary statement of financial position as at June 30, 2024, the summary statement of comprehensive revenue and expense, summary statement of changes in net assets, summary statement of cash flows and summary statement of service performance for the year then ended, and related notes, are derived from the audited financial report of Methodist Mission Southern (the Mission) for the year ended June 30, 2024. We expressed an unqualified audit opinion on this financial report, excluding the statement of service performance, and we expressed a qualified opinion on the statement of service performance, in our report dated September 6, 2024.

In our opinion, the accompanying summary financial report is consistent, in all material respects, with the audited financial report, in accordance with PBE FRS 43: Summary Financial Statements issued by the New Zealand Accounting Standards Board.

**Summary financial report**  
The summary financial report does not contain all the disclosures required by the Public Benefit Entity Standards Reduced Disclosure Regime issued by the New Zealand Accounting Standards Board. Reading the summary financial report and the auditor's report thereon, therefore, is not a substitute for reading the audited financial report and the auditor's report.

### The audited financial report and our report thereon

We expressed an unqualified audit opinion on the audited financial report, excluding the statement of service performance, and we expressed a qualified opinion on the statement of service performance. In our report dated September 6, 2024, the basis for our qualified opinion was there were no suitable systems in place during the period to enable the accurate recording of some relevant outputs identified in the statement of service performance, in accordance with Public Benefit Entity Standards. Because of these limitations, we were unable to obtain sufficient appropriate audit evidence to support the reporting of outputs for the current year and the comparative year. Consequently, we were unable to determine whether any adjustments to these amounts, which have been estimated by the Mission, were necessary.

**Board's responsibilities for the summary financial report**  
The Board is responsible for the preparation of the summary financial report in accordance with PBE FRS 43: Summary Financial Statements.

**Auditor's responsibilities**  
Our responsibility is to express an opinion on whether the summary financial report is consistent, in all material respects, with the audited financial report based on our procedures, which were conducted in accordance with ISA (NZ) 810 (Revised): Engagements to Report on Summary Financial Statements.

Other than in our capacity as auditor, we have no relationship or interest in the Mission.

**Restriction of Distribution or Use**  
This report is made solely to the Mission's Board, as a body. Our audit work has been undertaken so that we might state to the Mission's Board those matters which we are required to state to them in an auditor's report, and for no other purpose. To the fullest extent permitted by law, we do not accept or assume responsibility to anyone other than the Mission and the Mission's Board, as a body, for our audit work, for this report or for the opinions we have formed.

Vision Chartered Accountants

Vision Chartered Accountants Limited  
Chartered Accountants  
Dunedin  
6 September 2024

## SUMMARY FINANCIAL REPORT

Summary Statement of Comprehensive Revenue and Expense for the year ended 30 June 2024	2024	2023
Revenue from Exchange Transactions	8,090,790	4,574,019
Revenue from Non-Exchange Transactions	158,656	978,338
Less Total Expenses	7,775,611	5,610,241
Plus Net Surplus from Finance Activities	164,215	107,096
<b>Operating Surplus / (Deficit)</b>	<b>638,050</b>	<b>49,212</b>
Plus Other Gains / (Losses)	1,384	(48,365)
<b>Surplus / (Deficit) for the year</b>	<b>639,434</b>	<b>847</b>
Other Comprehensive Revenue and Expenses	-	-
<b>Total Comprehensive Revenue and Expenses for the Year</b>	<b>639,434</b>	<b>847</b>

Summary Statement of Financial Position as at 30 June 2024	2024	2023
<b>Assets</b>		
Current Assets	4,528,555	3,665,369
Non Current Assets	364,434	365,785
Total Assets	4,892,989	4,031,154
<b>Less Liabilities</b>		
Current Liabilities	729,380	506,979
Non Current Liabilities	-	-
Total Liabilities	729,380	506,979
<b>Net Assets</b>	<b>4,163,609</b>	<b>3,524,175</b>
<b>Equity</b>		
Accumulated Funds	4,163,609	3,524,175
<b>Total Equity</b>	<b>4,163,609</b>	<b>3,524,175</b>

Summary Statement of Changes in Net Assets for the year ended 30 June 2024	2024	2023
Balance at start of period	3,524,175	3,523,328
Surplus / (Deficit) for the year	639,434	847
Other comprehensive revenue and expenses	-	-
	<b>4,163,609</b>	<b>3,524,175</b>

Summary Statement of Cash Flows for the year ended 30 June 2024	2024	2023
Net Cash from / (used in) operating activities	1,006,898	(185,765)
Net Cash from / (used in) investing activities	(942,526)	118,603
Net increase / (decrease) in cash and cash equivalents	64,372	(67,162)
Cash and cash equivalents, beginning of the year	48,071	115,233
<b>Cash and cash equivalents at end of the year</b>	<b>112,443</b>	<b>48,071</b>

Summary Statement of Service Performance for the year ended 30 June 2024	2024	2023
<b>Performance by Programme (number of clients)</b>		
Drivers Licence	-	52
Parenting through Separation	152	372
Client Support	92	109
Sustaining Tenancies	131	100
Early Learning	149	151
Transition Housing	51	53
ENGAGE Teacher Development	35,653	7,791
ENGAGE Early Education Research (Kia Timata Pai)	2,271	2,271
	<b>38,499</b>	<b>10,899</b>

Performance by Location	2024	2023
Otago	14%	17%
Southland	3%	1%
Bay of Plenty	10%	10%
Auckland	60%	51%
Taranaki/Whanganui/Manawatu	5%	0%
Canterbury	2%	0%
Nationwide	6%	21%
	<b>100%</b>	<b>100%</b>

## NOTES TO THE SUMMARY FINANCIAL REPORT

This is the summary financial report of Methodist Mission Southern (the "Mission") for the year ended 30 June 2024.

The specific disclosures included in this summary financial report have been extracted from the full annual financial report that was authorised for issue by the Board on 6 September 2024. The full annual financial report dated 6th September 2024 has been prepared in accordance with Tier 2 Public Benefit Entity (PBE) Financial Reporting Standards as issued by the New Zealand External Reporting Board (XRB). They comply with New Zealand Equivalents to International Public Sector Accounting Standards Reduced Disclosure Regime (NZ IPSAS with RDR) and other applicable Financial Reporting Standards as appropriate to Public Benefit Entities.

This summary financial report does not include all the disclosures as in the full financial report and therefore cannot be expected to provide as complete an understanding as provided by the full financial report.

An unqualified audit opinion has been received on the financial statements, included in the full financial report for the year ended 30 June 2024. A qualified audit opinion has been received on the statement of service performance included in the full financial report. A copy of the full financial report of the Mission for the year ended 30 June 2024 may be obtained upon request from the Methodist Mission, Level One, 258 Stuart Street, Dunedin.

The summary financial report has been examined by our auditor for consistency with the full financial report. This summary financial report was approved for issue by the Board on 6th September 2024.

**Basis of Preparation** - The Mission is deemed a Public Benefit Entity and is registered with the Charities Commission.

This is the summary financial report and they comply with PBE FRS 43: Summary Financial Statements. The presentation currency is New Zealand dollars and all amounts have been rounded to the nearest dollar, except where otherwise indicated.

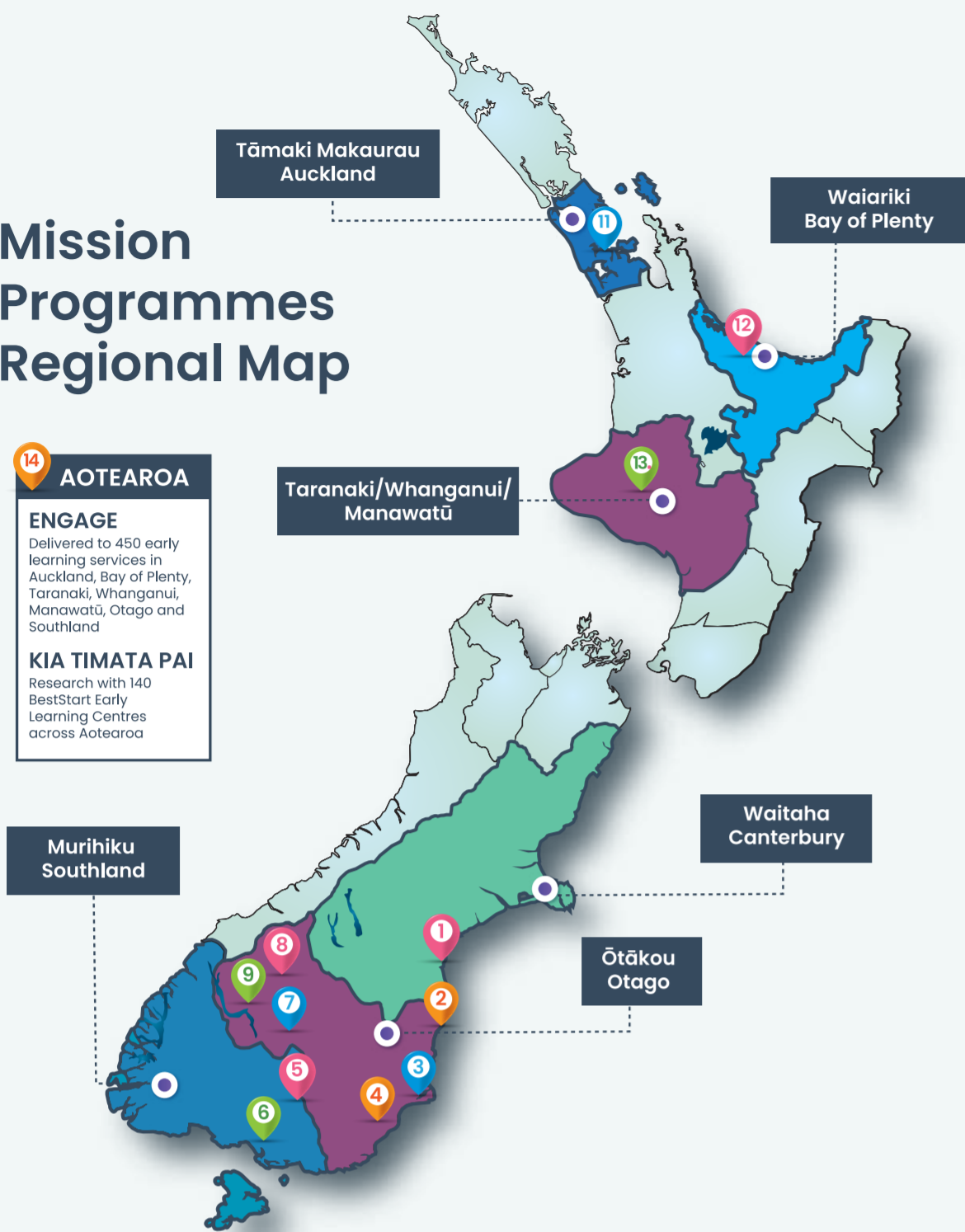
The full financial report upon which this summary financial report is based, has been prepared to comply with the Accounting Standards Framework for Public Benefit Entities.

**Specific Accounting Policies** - All specific accounting policies have been applied on the same bases as those used in the full financial report of the Mission.

**Changes in Accounting Policies** - The accounting policies have been applied consistently to all periods presented in this summary financial report and there have been no changes in accounting policies during the year.



# Mission Programmes Regional Map



- |  |  |   |
|--|--|---|
| 1. <b>Te Tihi-o-Maru (Timaru)</b><br>Sustaining Tenancies  | 5. <b>Maruawai (Gore)</b><br>ENGAGE Sustaining Tenancies   | 9. <b>Tāhuna (Queenstown)</b><br>ENGAGE Parenting Through Separation Sustaining Tenancies |
| 2. <b>Te Oha-a-Maru (Oamaru)</b><br>Parenting Through Separation ENGAGE Sustaining Tenancies   | 6. <b>Waihōpai (Invercargill)</b><br>ENGAGE Sustaining Tenancies Taituara a Hāpori Waihōpai Youth Transition House Young Mums Transition House | 10. <b>Otautahi (Christchurch)</b><br>ENGAGE  |
| 3. <b>Ōtepoti (Dunedin)</b><br>Taituara a Hāpori Dunedin Little Citizens ENGAGE Parenting Through Separation Ōtepoti Youth Transition House Sustaining Tenancies | 7. <b>Areketanara (Alexandra)</b><br>Parenting Through Separation Sustaining Tenancies   | 11. <b>Tāmaki Makaurau (Auckland)</b><br>ENGAGE   |
| 4. <b>Iwikatea (Balclutha)</b><br>ENGAGE Parenting Through Separation Sustaining Tenancies   | 8. <b>Wanaka (Wanaka)</b><br>ENGAGE Parenting Through Separation Sustaining Tenancies  | 12. <b>Waiariki (Bay of Plenty)</b><br>ENGAGE   |
|  |  | 13. <b>Taranaki/Whanganui/Manawatu</b><br>ENGAGE  |
|  |  | 14. <b>Aotearoa</b><br>ENGAGE Kia Timata Pai  |

# ENGAGE™

A play-based approach to supporting self-regulation for tamariki across Aotearoa

From July 2023 to June 2024, ENGAGE was successfully delivered to 450 new early learning services in Auckland, Bay of Plenty, Taranaki, Whanganui, Manawatu, Otago and Southland, with top-up support services delivered to a further 225 Early Learning Centres (ECEs).

This was the first year of the four-year funding package from the Ministry of Education, which will enable ENGAGE to reach 1,830 early learning services across, as well as delivering top-up support to a further 915 early learning services during that time.

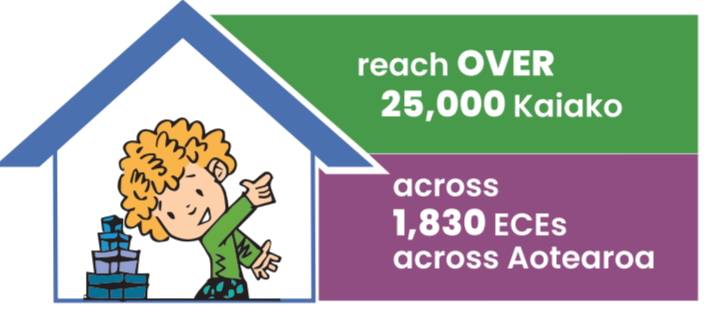
From July 2024, ENGAGE will be delivered across all ten Ministry of Education regions in Aotearoa.

ENGAGE is an evidence-based approach that supports pre-school tamariki to develop their self-regulations skills – the skills that help us manage our feelings, thoughts and behaviours.

ENGAGE was developed by Associate Professor Dione Healey and Methodist Mission Southern (MMS) has partnered with Dione since 2016 to adapt ENGAGE for group-based delivery to ECEs and primary schools and run research studies on the effects of developing self-regulation skills through ECE delivery.

By developing their self-regulation skills, tamariki are better able to recognise and manage their intense emotions, improve their attention and memory skills, persist with tasks when they become difficult or frustrating, have more successful and fulfilling relationships with others and regulate their behaviour when things are difficult. This leads to immediate benefits for tamariki and their ability to participate in ECE and schools, and life-long benefits in many other aspects of life (including physical health, mental health, education, employment, relationships and more – as evidenced by the famous Dunedin Longitudinal Study).

## The four-year-roll out of ENGAGE will



The benefits of the four-year roll-out of ENGAGE will be significant – reaching over 25,000 kaiako/teachers, who will then integrate the ENGAGE games and techniques into their teaching practice, to support the self-regulation skills of hundreds of thousands of tamariki/children.

If you are connected with an early learning service and would like to find out more about ENGAGE, please email us at:

[enquiries@engageplay.co.nz](mailto:enquiries@engageplay.co.nz)



## KIA TIMATA PAI

The Kia Timata Pai (KTP) study is now entering an exciting final phase, with the final assessments being completed for the initial cohort of tamariki/children, who have been part of the study since they were 18 months old and are now leaving Early Childhood Education (ECE) to start school.

The KTP team will be publishing findings from the study throughout late 2024 and 2025, with initial findings focussing on the outcomes of the ENRICH language programme, which was delivered to 70 ECEs when tamariki were aged from 18 months to 3 years.

KTP is a gold-standard research study that aims to test the effects of supporting oral language skills and self-regulation skills in a large group of tamariki attending BestStart ECEs from the age of 18 months to 6 years.

KTP is a partnership between Methodist Mission Southern (MMS), BestStart and University of Otago, and the project is funded by The Wright Family Foundation. KTP is working with over 1,000 ECE kaiako/teachers and over 1,000 tamariki – based at 140 BestStart ECEs around Aotearoa, with two evidence-based programmes being delivered: ENRICH and ENGAGE.

The science of child development and early childhood education has developed over past decades and many researchers now expect that a focus on supporting **both** oral language and self-regulation skills will provide the greatest overall benefit for tamariki.

While there is a large body of evidence (both from New Zealand and internationally) that demonstrates the benefits for tamariki when self-regulation skills are supported on their own, or oral language skills are supported on their own, there is currently little evidence of the effects of supporting **both** sets of skills at the same time. KTP is designed to test the effects of supporting both sets of skills, and because KTP is taking place in real world conditions on a very large scale and using programmes that can be easily scaled-up, the study has the potential to significantly impact research, policy and practice.



## HŌTAKA: NOHO TAU – SUSTAINING TENANCIES

### A Journey to Warmth and Stability: One Client's Success Story

After working with one of our clients for over a year, we are thrilled to share their successful outcome. They were living in a cold, damp and depressing unit. Despite numerous attempts to address maintenance issues with the property manager, who was unresponsive, the situation remained dire.

The property manager eventually issued a 90-day notice to sell the complex, leaving the client worried about finding new housing. Our Taituarā a Hāpori/Community Services Specialist (CSS) continued to support them, applying for multiple homes without success. Working closely with MSD, we explored social housing options.

With persistent effort, we secured housing with Kāinga Ora for the client, who was overjoyed and relieved to have a safe, warm place to live. The client is now settled into their new home, and things are looking up.

Since our Sustaining Services began in Southland and Otago over 4 years ago, we have supported over 210 clients from diverse backgrounds, each facing unique challenges with more people needing help than the contract funds.

Sustaining Tenancies not only addresses immediate needs but also focuses on long-term stability and self-sufficiency for individuals and families. By offering safe and stable housing solutions and support services, we significantly contribute to our community's overall welfare, creating an inclusive and supportive environment where individuals can thrive and lead fulfilling lives.

We employ a whānau-led approach, where our Taituarā a Hāpori/Community Services Specialist helps to create personalised plans and offers a variety of services tailored to the needs of individuals and whānau. These services include life skills coaching, advocacy, referrals to other support services, budgeting advice and representing tenants in dealings with landlords.

Over the past 12 months, rental referrals have become increasingly complex, and increasing in numbers with issues such as hoarding, anti-social behaviour and neighbour disputes. This has highlighted the need for a collaborative, multi-agency approach to address a variety of challenging issues. While the concerns are extensive, the successes achieved in most cases demonstrate the effectiveness of this strategy. Continued efforts and strong partnerships with outside agencies are crucial for maintaining and enhancing the well-being of tenants and the broader community.

We are committed to helping individuals and whānau achieve stability in secure homes, tackling homelessness head-on, and creating a supportive and connected community for everyone.



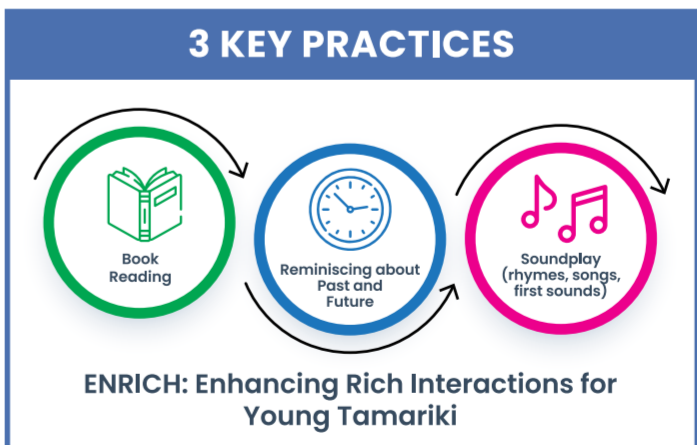
Supported **OVER 210** clients with diverse backgrounds

## ENRICH

Since 2019, Methodist Mission Southern has worked closely with Professor Elaine Reese and Dr Elizabeth Schaughency (University of Otago) to develop and test the ENRICH programme, as part of the Kia Timata Pai study.

ENRICH is an evidence-based programme that supports tamariki to develop oral language and communication skills – starting from the age of 18 months through to 5 years.

ENRICH is specifically designed for busy Early Childhood Education (ECE) environments in Aotearoa – focussing on serve and return interactions, book-reading, reminiscing about past and future, and sound play – with games, activities and techniques designed for common routines that happen regularly throughout the day in ECEs (book time, group time, kai time, play time, greetings and farewells and nappy change time (with toddlers).



70 BestStart ECEs have been delivering the programme and contributing feedback and ideas for ongoing design improvements, making sure that ENRICH is suitable for sharing with a larger group of ECEs outside of the Kia Timata Pa in study in 2025.

**70** Beststart ECEs delivering programme



# 2024 Annual Report

methodist missionsouthern  
Te Haahi Weteriana o Aotearoa  
A member of the Methodist Alliance

## HELP TO MAKE A DIFFERENCE

Methodist Mission Southern works to create positive, sustainable change for individuals and families throughout Otago and Southland. While we currently achieve a lot, we will achieve even more with your support.

Please join our Supporters' Club, and receive monthly newsletters.

**Direct Credit**

Bank: BNZ  
Account Name: Methodist Mission Southern  
Account Number: 02-0912-0216744-000

**Via Givealittle**

Head over to our Methodist Mission Southern Givealittle page.  
<https://givealittle.co.nz/org/methodistmissionsouthern>

**Payroll Giving**

Sign up for Payroll Giving with your employer. You can then set up a donation of any amount at your chosen frequency.

**Leave a Legacy**

Bequest for a future of support and social justice. Information brochure available on request

To find out more about the Mission, please feel free to contact us on (03) 466 4600 or [admin@mmsouth.org.nz](mailto:admin@mmsouth.org.nz)

[@methodistmissionsouthern](https://www.facebook.com/methodistmissionsouthern) [@hellommssouth](https://www.instagram.com/hellommssouth) [www.mmsouth.org.nz](https://www.mmsouth.org.nz)