

2022 ANNUAL REPORT



methodist
missionsouthern
Te Haahi Weteriana o Aotearoa

Matua te tihi
Matua te kaha
Matua te āio
Matua te mana
Whiua te hā kino
Tōkia te hā ora
Ki runga, ki raro, ki waho, ki roto
Haumi e, Hui e, Tāiki e

We seek to achieve great things
We seek strength
We seek calmness
We seek to enhance mana
Cast aside anxieties
Surround ourselves with everything good
Above us, below us, outside of us, inside us
To this we all agree

In 2011 Dunedin Study research showed that the successful development of self-control in young children has lifelong beneficial impacts on physical health, substance dependence, personal finances, and criminal offending.

In 2012 Associate Professor Dione Healey presented on the success of her ENGAGE (enhancing neurocognitive growth with the aid of games and exercise) intervention in fostering the development of pre-schoolers' self-control. The intervention consisted of 25 families playing simple, enjoyable games over a 10-week period.

In September 2016, Jimmy McLauchlan, the Mission's Kaiwhakawhanake Pakihi – Chief Development Officer – began working with Dione, to adapt and implement ENGAGE for widespread roll-out in the early childhood education sector.

Research published by Dr Jin Russell in July 2022 shows that 19.5% of New Zealand 4-year-olds have "early learning difficulties" associated with poor executive functioning. With 58,695 births in 2021 we gained another 11,000 tamariki who will miss out the lifelong advantage of controlling how they think, feel, and act.

Today ENGAGE has reached almost 3,000 early education kaiako (teachers), and nearly 8000 tamariki, in over 300 early childhood education centres and primary schools (during COVID!). In the coming financial year, we expect to on-board at least another 150 plus early childhood centres of the nearly 5000 in New Zealand.

We are leading a major research programme, Kia Timata Pai, supported by the Wright Family Foundation, the BestStart network of early childhood education centres, and University of Otago researchers, testing ENGAGE, and Professor Elaine Reese's ENRICH intervention to support language development (a precursor to self-regulation) with 140 BestStart centres and over 1,500 tamariki and kaiako.

We are also running research projects with partners in kōhanga reo and kura kaupapa and with multicultural playgroups across Auckland to ensure the evidence on self-regulation and language development can benefit tamariki and whānau from all backgrounds.

We can do more. We now know how to scale a mass roll-out while undertaking ongoing research into development and delivery. We can help much more than the 100-150 centres a year the Ministry of Education has so far been able to support.

Getting here has not been easy or cheap; NGOs typically don't have these sorts of skillsets or working capital close to hand.

The unstinting generosity of the Tindall Family Foundation, who have supported us with their time, advice, whanaungatanga, and ongoing funding, has been foundational. Our thanks to Margaret and Stephen and the TFF team lead by John, Dione, Richie, and Elaine through the University of Otago, have and continue to be amazing partners. Our contractors in Auckland, the Bay of Plenty, and Otago have done fantastic work.

But in Aotearoa, the road that new initiatives must travel to be ready for national roll-out is a challenging one. Even with a coalition of world-renowned researchers and the backing of one of New Zealand's largest philanthropic foundations, there have been moments of risk to the project.

Our hope for the coming financial year is that a more stable pathway for new, evidence-backed, initiatives to reach their full potential.

Laura Black, Kaihautū, *Director* & Julie Pearse, Tiamana, *Chair*



YOUNG MUMS HOUSE



In August this year, Methodist Mission Southern opened a Young Mums Transition House in Waihopai, which provides a safe and nurturing environment for teenage mums and their pēpi/babies – helping them to successfully transition towards independent living.

While teenage pregnancies have been on the decline in New Zealand, our rates remain high compared to other countries. Without timely support, some of our younger mums may be at greater risk of experiencing negative health, education, employment and social outcomes, but when the right support is provided, young mums and their pēpi are absolutely capable of thriving.

The Young Mums Transition House receives referrals from Govt agencies, NGO/community providers, and self-referrals from rakatahi and their whānau. MMS provides specialist support via our Taituarā a Hāpori (as in our other transitional houses) to support our residents to work towards their social, education and employment goals, and to find suitable options for independent living. Our team of support workers in the house ensure residents are safe and supported while living in the house and are developing important living skills – empowering young mums to be successful and self-reliant, and to raise healthy, resilient tamariki.

With our strengths-based, client-led practices, we support young mums to have successful futures.

All residents will achieve several of the following, as per their individual plans.

GOALS



Accommodation

Sustainable transitions to independent accommodation



Child development

Foundations laid for a positive life course for mother and child



Health

Improved physical, mental and sexual health outcomes



Personal Development

Improved self-management skills and living skills, leading to long-term resiliency

SUSTAINING TENANCIES

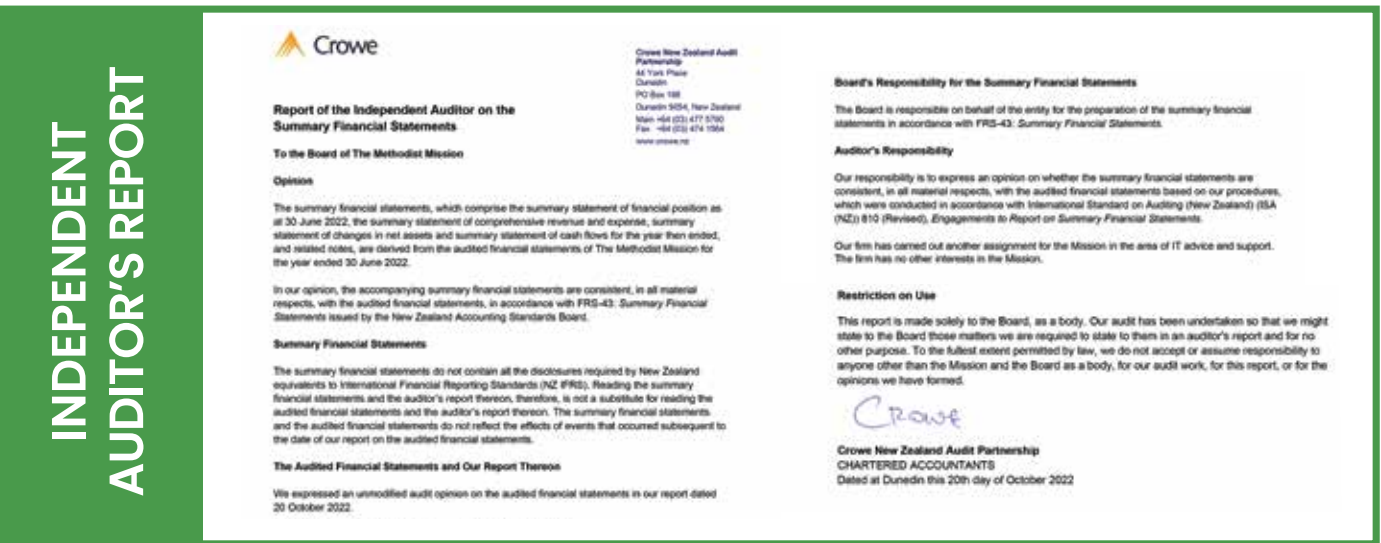
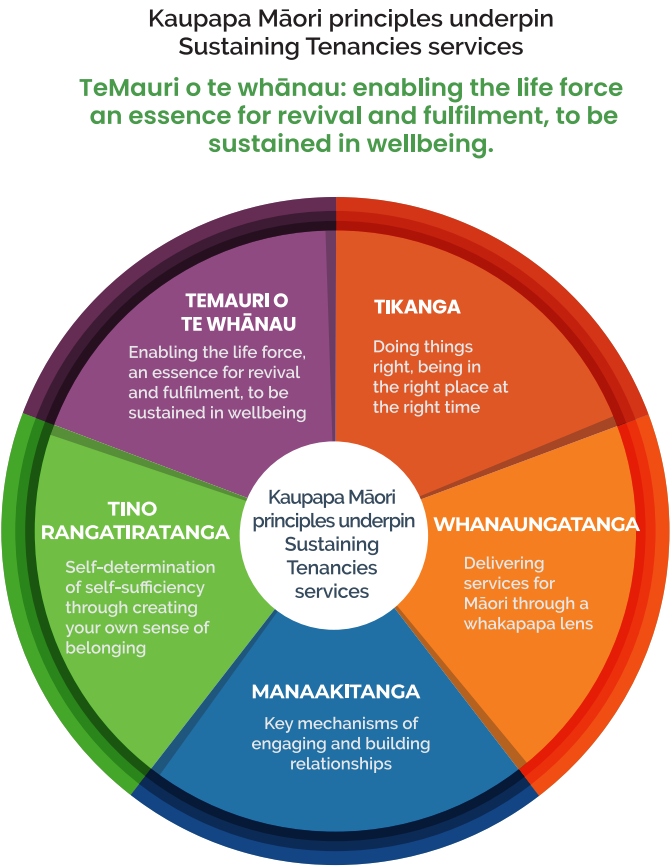


Sustaining Tenancies is an initiative to prevent homelessness, funded by the Ministry of Housing and Urban Development.

The Mission supports individuals and whānau to stay in the houses they have by addressing issues that put their tenancy at risk. The Methodist Mission employed its first Sustaining Tenancies Taituarā a Hāpori (Specialist Support Worker) in Waihopai in October 2020 and despite the difficulties of COVID has managed to help a considerable number of people. Following our first successful year, the Ministry contracted us to do the same work in Otago.

For too many people, low income, unsuitable rental housing, historic and ongoing family problems, addiction issues, and expectations from landlords can combine, triggering homelessness. The objective of Sustaining Tenancies is that 'homelessness is prevented where possible, or is rare, brief and nonrecurring'.

Sustaining Tenancies develop whānau-led plans and offer services wrapped around the individual or whānau. This could involve life skills coaching, advocacy, and support to navigate services, referral to budgeting advice and advocacy with landlords. Our Taituarā a Hāpori work with tenants to develop exit plans for when they leave the service.



SUMMARY FINANCIAL REPORT

Summary Statement of Comprehensive Revenue and Expense for the year ended 30 June 2022	2022	2021
Revenue from Exchange Transactions	4,644,152	3,284,669
Revenue from Non-Exchange Transactions	408,734	1,027,731
Less Total Expenses	4,969,359	4,234,454
Plus Net Surplus from Finance Activities	74,727	131,351
Operating Surplus / (Deficit)	158,254	209,297
Plus Other Gains / (Losses)	(16,981)	(36,782)
Surplus / (Deficit) for the year	141,273	172,515
Other Comprehensive Revenue and Expenses	-	-
Total Comprehensive Revenue and Expenses for the Year	141,273	172,515

Summary Statement of Financial Position as at 30 June 2022	2022	2021
Assets		
Current Assets	3,721,648	3,471,953
Non Current Assets	341,564	354,496
Total Assets	4,063,212	3,826,449
Less Liabilities		
Current Liabilities	539,884	444,394
Non Current Liabilities	-	-
Total Liabilities	539,884	444,394
Net Assets	3,523,328	3,382,055
Equity		
Accumulated Funds	3,523,328	3,382,055
Total Equity	3,523,328	3,382,055

Summary Statement of Changes in Net Assets for the year ended 30 June 2022	2022	2021
Balance at start of period	3,382,055	3,209,540
Surplus / (Deficit) for the year	141,273	172,515
Other comprehensive revenue and expenses	-	-
Total	3,523,328	3,382,055

Summary Statement of Cash Flows for the year ended 30 June 2022	2022	2021
Net Cash from / (used in) operating activities	198,986	166,113
Net Cash from / (used in) investing activities	(234,881)	(52,883)
Net increase / (decrease) in cash and cash equivalents	(35,895)	113,230
Cash and cash equivalents, beginning of the year	151,128	37,898
Cash and cash equivalents at end of the year	115,233	151,128

NOTES TO THE SUMMARY FINANCIAL STATEMENTS

These are the summary financial statements of the Methodist Mission (the "Mission") for the year ended 30 June 2022.

The specific disclosures included in these summary financial statements have been extracted from the full annual financial statements that were authorised for issue by the Board on 20th October 2022. The full annual financial statements dated 20th October 2022 have been prepared in accordance with Tier 2 Public Benefit Entity (PBE) Financial Reporting Standards as issued by the New Zealand External Reporting Board (XRB). They comply with New Zealand Equivalents to International Public Sector Accounting Standards Reduced Disclosure Regime (NZ IPSAS with RDR) and other applicable Financial Reporting Standards as appropriate to Public Benefit Entities.

This summary financial report does not include all the disclosures as in the full financial statements and therefore cannot be expected to provide as complete an understanding as provided by the full financial statements comprising comprehensive revenue and expense, financial position and cash flows of the Mission.

An unqualified audit opinion has been received on the full financial statements for the year ended 30 June 2022. A copy of the full financial statements of the Methodist Mission for the year ended 30 June 2022 may be obtained upon request from the Methodist Mission, Level One, 258 Stuart Street, Dunedin.

The summary financial report has been examined by our auditor for consistency with the full financial statements. An unqualified audit opinion has been received. These summary financial statements were approved for issue by the Board on 20th October 2022.

Basis of Preparation – The Mission is deemed a Public Benefit Entity and is registered with the Charities Commission.

These are the summary financial statements and they comply with PBE FRS 43 Summary Financial Statements. The presentation currency is New Zealand dollars and all amounts have been rounded to the nearest dollar, except where otherwise indicated.

The full financial statements upon which these summary financial statements are based, have been prepared to comply with the Accounting Standards Framework for Public Benefit Entities.

Specific Accounting Policies – All specific accounting policies have been applied on the same bases as those used in the full financial statements of the Mission.

Changes in Accounting Policies – The accounting policies have been applied consistently to all periods presented in these summary financial statements and there have been no changes in accounting policies during the year.

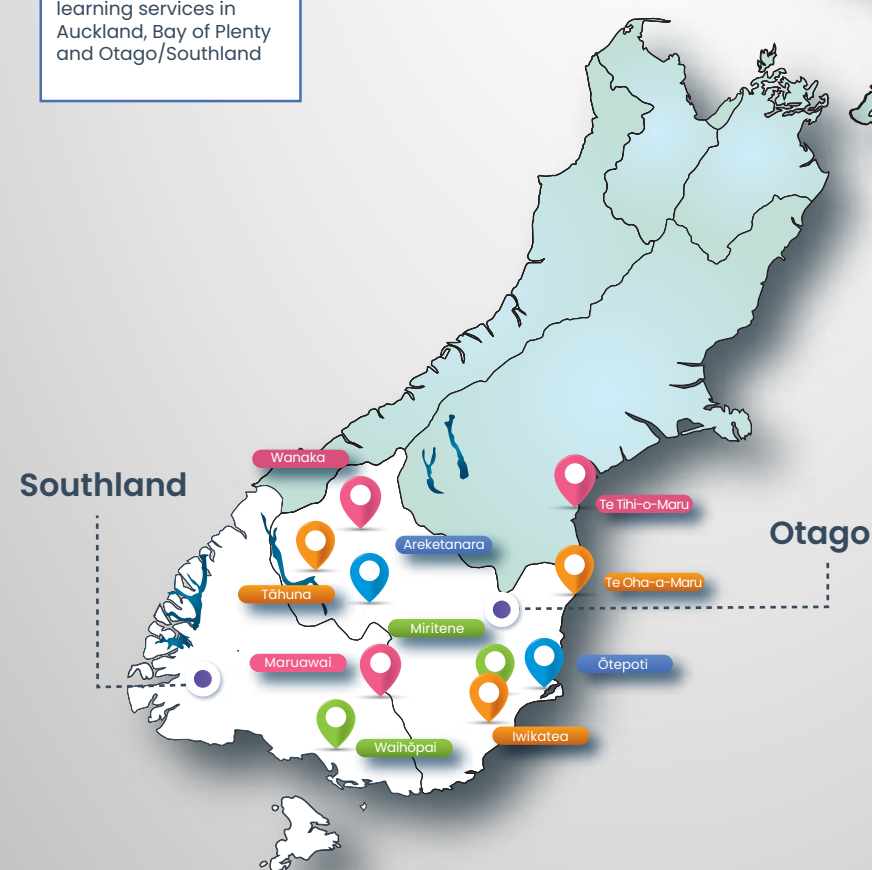
METHODIST MISSION MAJOR FUNDERS & PRIVATE DONORS

Accident Compensation Corporation (ACC)	New Zealand Graduate of Women (Otago)	Private Donors
Alexander McMillan Trust	New Zealand Lotteries	Bruce Spittle
Department of Corrections	Oranga Tamariki – Ministry for Children	Debbie Iversen & Wayne Goodall
Dunedin City Council	Otago Community Trust	Fabb Ltd - (Just Love Photography)
Invercargill City Council	Philanthropy New Zealand	Father Peter Devereux
Methodist Church of New Zealand (Te Haahi Weteriana o Aotearoa)	Social Wellbeing Agency	G R Thomas
Milton Community Health Trust	Tertiary Education Commission	Greg & Rachel Fahy
Ministry of Education	Tindall Foundation	June Jarka
Ministry of Housing & Urban Development	Vodafone	Laura Black
Ministry of Justice	University of Otago	
Ministry of Social Development	Wesleydale Trust	
	Wright Foundation	

Mission Programmes Regional Map

ENGAGE

Delivered to 150 early learning services in Auckland, Bay of Plenty and Otago/Southland



Te Tihi-o-Marū (Timaru)
Sustaining Tenancies

Te Oha-a-Marū (Oamaru)
Parenting Through Separation Sustaining Tenancies

Ōtepoti (Dunedin)
Community Services Specialist
Dunedin Little Citizens
ENGAGE
Parenting Through Separation
Ōtepoti Youth Transition House
Sustaining Tenancies

Miriāne (Milton)
Parenting Through Separation Sustaining Tenancies

Iwikatea (Balclutha)
Parenting Through Separation Sustaining Tenancies

Maruawai (Gore)
Sustaining Tenancies
Waihopai (Invercargill)
Sustaining Tenancies
Waihopai Youth Transition House
Young Mums Transition House

Areketanara (Alexandra)
Parenting Through Separation Sustaining Tenancies

Wanaka (Wanaka)
Parenting Through Separation Sustaining Tenancies

Tāhuna (Queenstown)
Parenting Through Separation Sustaining Tenancies

Aotearoa (New Zealand)
Integrated Services Hub
ENGAGE

SUPPORT THE MISSION



Methodist Mission Southern works to create positive, sustainable change for individuals and families throughout Otago and Southland. While we currently achieve a lot, we will achieve even more with your support.

Please join our Supporters' Club, and receive monthly newsletters.

Ways you can help (individuals):

- A one-off donation via our Givealittle page - <https://givealittle.co.nz/org/methodistmissionsouthern>
- Regular giving via automatic payment
- Sign up for Payroll Giving with your employer
- To leave a legacy for our future, please consider a bequest

Ways you can help (businesses):

- Support Payroll giving
- One-off donation donating goods or services
- Sponsorship opportunities with name-association
- One-off fundraiser
- Volunteering

To find out more about the Mission, please feel free to contact us on (03) 466 4600 or admin@mmsouth.org.nz

[f @methodistmissionsouthern](https://www.facebook.com/methodistmissionsouthern) [@hellommsouth](https://www.instagram.com/hellommsouth) www.mmsouth.org.nz



LITTLE CITIZENS EARLY LEARNING



The Mission's Little Citizens Early Learning Centre has had a tumultuous year, with nearly all our staff unwell with COVID, isolating as a household contact for COVID, or caring for a dependent with COVID in the first 6 months of 2022. It has been a challenge!

We have worked with whānau to ensure that everyone has masks, tests, and access to good quality information about COVID. We were delighted when in response to a survey, whānau told us that our support systems were working, they were happy with the information we shared, and felt supported financially.

The Isolating Tamariki learning packs we prepared flew out the door as we worked hard to keep up with demand.

The breakfasts, lunches, and dinners provided by our Cook have also been more welcome than ever.

The challenge over the next few years will be to begin the search for a new home: Little Citizens is on climate-vulnerable land in South Dunedin, in a 100 year old primary school. In the next 10 years we shall need to be somewhere higher, drier, and purpose-built. It is an exciting prospect.



YOUTH TRANSITION HOUSES



Our Youth Transition Houses (YTH) are helping decrease youth homelessness in Ōtepoti and Waihopai by offering the option of transitional housing.

Our Ōtepoti YTH was opened in 2018 while our Waihopai YTH was opened in 2019 – funded by Ministry of Housing and Urban Development, with support from Ministry of Social Development and additional contributions from philanthropic funders and individual donors. Each home can support up to 6 residents aged 16-19 years who would otherwise be homeless, to help them successfully transition to independent living.

YTH provide a safe and supported living environment that offers rangatahi evening and overnight support, provided by overnight staff who stay at the house, individual goal-setting plans, access to personal and life skills development such as budgeting and cooking, and health services to enhance their physical and social resilience. Our YTH houses are an extremely cost-effective early intervention for youth homelessness – providing timely support, collaborating with other service providers to help rangatahi achieve their goals, and move successfully through to independent living in an average transition time of just over 20 weeks.

Our homes have helped dozens of young people find secure accommodation, and 90% of the people who stayed have successfully achieved their goals.



90%
of residents have successfully achieved their goals

"Celine wanted to be able to support herself independently, acquire full-time employment and suitable long-term accommodation. She also wanted to be able to support her younger brother in his transition out of home. Celine obtained full-time work while living at the transition house. Being a hard worker and focused on saving money to support herself financially, meant that after attending many housing viewings together with the Kairuru Whare - Kaupapa Rahatahi (YTH Coordinator), she was able to secure a good room in a flat."



ENGAGE is an evidence-based approach that supports tamariki to develop their self-regulation skills through play.

ENGAGE was developed by Associate Professor Dione Healey (University of Otago) – and is delivered to ECEs and primary schools by Methodist Mission Southern (MMS) and our team of facilitators.

Supporting self-regulation skills in the early years of life is one of the most powerful ways to support improved outcomes for a generation of tamariki – setting them up for improved behaviours and learning outcomes while at ECE and primary school, and helping to support improved outcomes through the rest of the lives, including better mental health, physical health, employment and relationships outcomes (as demonstrated by the Dunedin Longitudinal Study's famous 2011 paper).

For this reason – we are excited to be on the verge of making ENGAGE available on a national scale – as the result of numerous research trials since 2017, and several successful projects in the 2021/22 year:

► ENGAGE Scale-Up Pilot

We successfully delivered ENGAGE to 150 early childhood centres in Auckland, Bay of Plenty / Wairariki and Otago – funded by the Ministry of Education. Our ENGAGE facilitators did an incredible job of responding to the Delta and Omicron outbreaks during the pilot, and supporting ECE teachers who were dealing with lockdowns, COVID traffic light restrictions, illness, absences and other staffing shortages.

As a result of the pilot (and ongoing support from The Tindall Foundation), we have increased our pool of trained ENGAGE facilitators and have established important operational and quality assurance roles to ensure we now have the ability to successfully deliver ENGAGE to thousands of ECE across the country – and we will be working towards commencing this scaling-up process during the next 12 months.

► Kia Tīmata Pai

The Kia Tīmata Pai (KTP) research study has also successfully overcome some big operational challenges presented by COVID – with over 1,500 tamariki and teachers at 150 BestStart ECEs around New Zealand actively participating in the study – which involves testing a combination of evidence-based programmes that support early language development (ENRICH – developed by Professor Elaine Reese, University of Otago) and self-regulation development (ENGAGE) and follows a cohort of tamariki from 18 months of age until age 6 – to determine the optimum approach for supporting healthy development.

The KTP study is a gold-standard trial that has the potential to make important contributions to policy and practice on an international scale – and is a very large collaborative effort between MMS, BestStart, Emotional Regulation Aotearoa New Zealand, University of Otago, and the Wright Family Foundation – and the thousands of tamariki, teachers and whānau that are using these evidence-based techniques every day for over 4 years, and providing the research team with incredibly rich data and feedback.

► ENGAGE Whakaoriori Wellbeing Project

We are privileged to be working in partnership with Te Kura Kaupapa Māori o Wairarapa and Te Kōhanga Reo o Ngāti Hāmua in Masterton – to test ENGAGE in full-immersion te reo Māori learning environments and to understand how the ENGAGE approach might complement/align with te ao Māori approaches to supporting wellbeing in the pre-school and early primary school years.

We expect this project will give us some rich insights and help us to navigate an ongoing journey of working with mana whenua partners and te ao Māori subject matter experts and practitioners.

► ENGAGE Multicultural Playgroup Project

We have been piloting ENGAGE with 7 multicultural playgroups in Auckland – which provides an incredible opportunity to test and adapt the approach to support a very diverse group of whānau and tamariki (many whānau are former refugees or recent migrants) with a wide range of cultural backgrounds and spoken languages – and to test how best to support younger children (often aged 18 months to 3 years) in a playgroup context.

This project has provided some fantastic insights – and we will continue to build on this project over the next 12 months to ensure ENGAGE is able to inclusively support diverse tamariki and whānau in a range of settings as it becomes more widely delivered around New Zealand.

► ENGAGE StartWell Project

We partnered with the South Auckland Social Wellbeing Board and the Counties Manukau District Health Board – to deliver ENGAGE to a cohort of young mothers and their whānau in South Auckland – teaming up with the StartWell programme, with community-based social workers and health workers delivering the ENGAGE training to whānau.

► ENGAGE School, Whānau and Community Pilot

We worked with ACC to test and learn about different approaches to delivering ENGAGE to primary schools in Auckland, and then supporting these schools to share the approach with their whānau and community connections – to build on the positive momentum and progress that is achieved by delivering ENGAGE in classroom settings.



Top Photo: Jacinda Arden, Chris Hipkins and Jan Tinetti visit Akoteu Kato Kakala in Ōtara to see ENGAGE in action and meet some of the teachers, families, facilitators and funders connected with ENGAGE.

Middle Photo: Jacinda Arden speaks at the ENGAGE visit at Akoteu Kato Kakala.

Bottom Photo: Tamaiti playing with an ENGAGE activity.



2022 Annual Report

methodist
missionsouthern
Te Haahi Weterana o Aotearoa